

WORKSHOP

Assessing Decision Risk in Species Range Maps and Distribution Models for Use in Conservation and Management

Association of Fish & Wildlife Agencies 108th Annual Meeting, Tampa, FL
9 September 2018

All spatially-based (landscape-scale) management relies to some extent on knowledge of species distributions. At the level of the Endangered Species Act, distributions are clearly integral to ESA-related Federal Register documentation. Defensible distributions are equally integral to most state-based Wildlife Action Plans, as well as being important to land management agencies such as the BLM, NPS, and USFS.

But ... do you

- Have concerns over application of species distribution models in management?
- Know what skill sets agency analysts should have for creating defensible SDMs for WAPs, FWS Species Status Assessments, and other applications?
- Understand what constitutes a "decision-quality" SDM?
- Know how to evaluate the strengths and weakness of a proffered SDM?

If these and similar questions are of interest to you, then consider attending this AFWA-sponsored workshop on assessing decision risk in species distribution models.

Conveners:

Thomas Edwards and **John Organ**

U.S. Geological Survey, Cooperative Research Units Program (t.edwards@usu.edu and jorgan@usgs.gov)

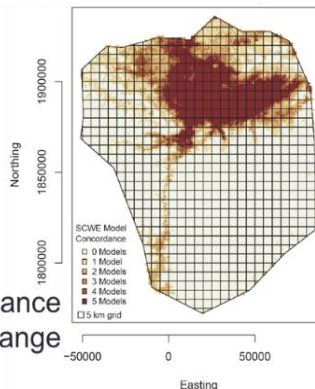
- **So how do I comparatively evaluate among these different map products for this listed plant species?**



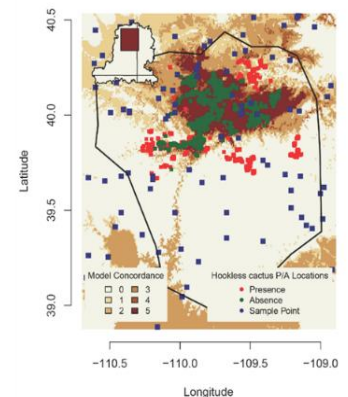
FWS ECOS-defined range



Biologist-based generalized range map



Concordance modeled range



Concordance model w/locations and evaluation points